

Mixing valve - ABV4

- Female thread 1/2" - 1 1/4"
- Male thread 3/4" - 1 1/2"
- 22CU or 28CU compression fitting
- Prepared for motorisation
- Suitable for connecting two heat sources



Description

Mixing- and diverting valve.

Construction

4-way bivalent mixing- and diverting valve in brass. Connection female thread 1/2" - 1 1/4" alternatively male thread 3/4" - 1 1/2" alternatively compression fitting 22CU or 28CU. O-rings in EPDM. The valve can be used in heating and cooling systems and is prepared for motorisation with a standard four-point attachment. Suitable actuators could for example be Belimo, Ouman, Seltron, Evenes, Automix, Vexve and ESBE. Turning direction can be changed without tools, even when pressurized.

Marking

Port number, UP, turning direction and scale.

Maintenance

Mixing- and diverting valves are normally maintenance-free. If necessary, the o-rings, stem and cover can be replaced. Item number 0431920812.

Technical data

Body	Brass
Closing element	Brass
Cover	Fortron
Handle	POM
O-rings	EPDM

Maximum working pressure: 10 bar
 Maximum working temperature: +120°C
 Minimum working temperature: 0°C

Torque: < 3 Nm
 Turning angle: 90-degrees

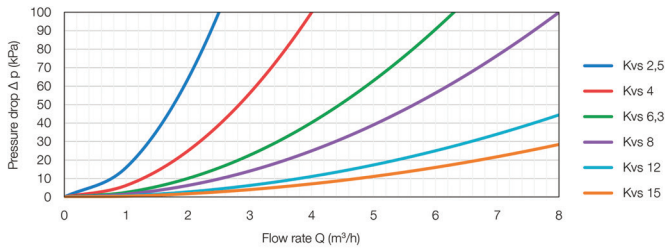
Pressure drop: See pressure drop chart page 2
 Flow rate-opening angle: See chart page 2
 Kv-value: See page 2

Media: Water - glycol mix (ethylene, propylene) max 30%
 Media: Water - ethanol mix max 30%

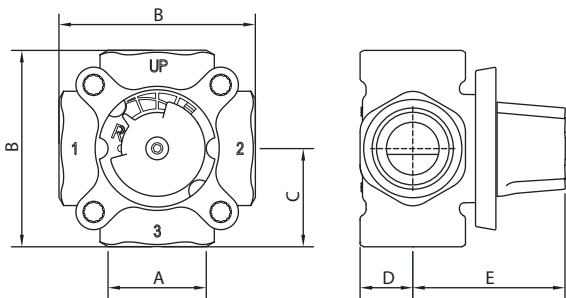
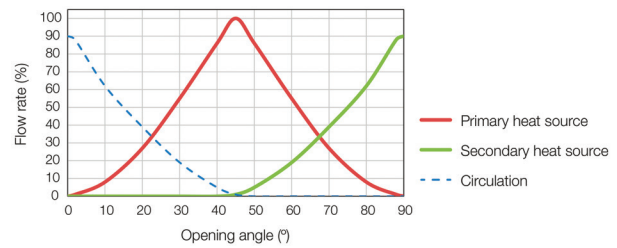
Subject to technical changes and corrections without notice

Mixing valve - ABV4

Pressure drop chart



Flow rate-opening angle



Item number	Description	Connection A	B	C	D	E	Kv (m³/h)	Weight (kg)
0431550005	Mixing valve ABV 4101, 1/2" F, kv 2,5	1/2" F	72	36	17	60	2,5	0,5
0431550015	Mixing valve ABV 4103, 1/2" F, kv 6,3	1/2" F	72	36	18	60	6,3	0,5
0431550020	Mixing valve ABV 4110, 3/4" F, kv 2,5	3/4" F	72	36	18	60	2,5	0,6
0431550030	Mixing valve ABV 4112, 3/4" F, kv 6,3	3/4" F	72	36	22	64	6,3	0,6
0431550035	Mixing valve ABV 4121, 1" F, kv 8,0	1" F	82	41	22	64	8,0	1
0431550040	Mixing valve ABV 4122, 1" F, kv 12,0	1" F	82	41	22	64	12,0	1
0431550045	Mixing valve ABV 4130, 1 1/4" F, kv 12,0	1 1/4" F	94	47	25	64	12,0	1,2

Item number	Description	Connection A	B	C	D	E	Kv (m³/h)	Weight (kg)
0431550065	Mixing valve ABV 4201, 3/4" M, kv 2,5	3/4" M	72	36	17	60	2,5	0,5
0431550075	Mixing valve ABV 4203, 3/4" M, kv 6,3	3/4" M	72	36	18	60	6,3	0,5
0431550080	Mixing valve ABV 4210, 1" M, kv 2,5	1" M	72	36	18	60	2,5	0,6
0431550090	Mixing valve ABV 4212, 1" M, kv 6,3	1" M	72	36	18	60	6,3	0,6
0431550095	Mixing valve ABV 4221, 1 1/4" M, kv 8,0	1 1/4" M	82	41	22	64	8,0	1
0431550100	Mixing valve ABV 4222, 1 1/4" M, kv 12,0	1 1/4" M	82	41	22	64	12,0	1
0431550115	Mixing valve ABV 4230, 1 1/2" M, kv 12,0	1 1/2" M	94	47	25	64	12,0	1,2

Item number	Description	Connection compression fitting	B	C	D	E	Kv (m³/h)	Weight (kg)
0431550130	Mixing valve ABV 4321, 22CU, kv 2,5	22CU	105	52,5	17	60	2,5	0,8
0431550140	Mixing valve ABV 4323, 22CU, kv 6,3	22CU	105	52,5	17	60	6,3	0,8
0431550145	Mixing valve ABV 4330, 28CU, kv 2,5	28CU	109	54,5	19	60	2,5	1,0
0431550155	Mixing valve ABV 4332, 28CU, kv 6,3	28CU	109	54,5	19	60	6,3	1,0

All dimensions in millimetres

Subject to technical changes and corrections without notice